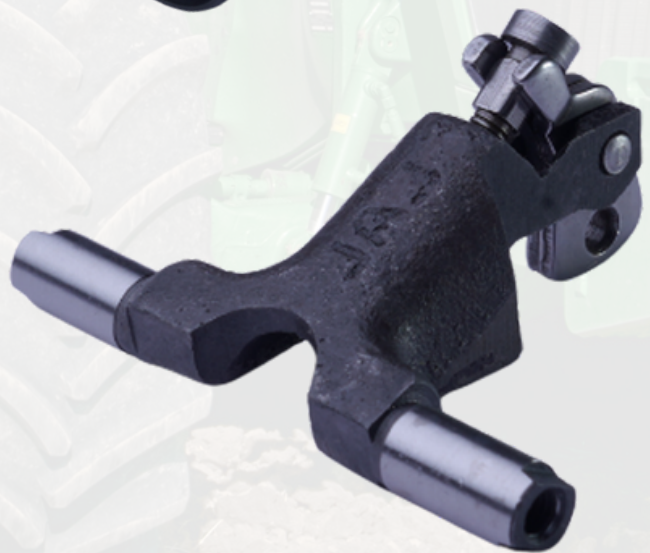




**DIESEL FUEL INJECTION SPARES**

# **CATALOG**



# **LAL INDUSTRIES**

**Mfrs. & Exporters of Diesel Fuel Injection  
Spares & Automotive Components.**

# TABLE OF CONTENT

01. FEED PUMP & FEED PUMP PARTS
02. HAND PRIMERS
03. GOVERNOR ASSEMBLIES & SPARE PARTS
04. OVER FLOW VALVES & OVER FLOW PIPES
05. TAPPET ROLLERS & ASSEMBLIES
06. NOZZLE CAP NUTS
07. BANJO BOLTS & BANJO TEES
08. DIESEL FILTER COVER & ASSEMBLIES
09. RACKS & GEARS
10. NUTS, BOLT & SCREWS
11. RUBBER COMPONENTS & OIL SEALS
12. COPPER & ALUMINIUM WASHERS
13. VE PUMP PARTS
14. TRACTOR PARTS
15. MISCELLANEOUS ITEMS

# WHY CHOOSE LAL INDUSTRIES?

Lal Industries, a leading manufacturer and exporter of high-quality diesel pump parts since 1979. With a strong legacy spanning 44 years, we specialize in crafting precision-engineered components that power diesel pumps across industries worldwide. We produce a very wide range of superior-quality diesel fuel injection spares and other automotive components. Our range includes Feed pumps, Hand primers, Nozzle caps, Overflow valves, Non-return valves, Tappets and rollers, Governor parts, Fuel injection pipes, Banjo bolts, Diesel filter assemblies, Washers, Gaskets, Rubber components, etc. At Lal Industries, our commitment to excellence drives every aspect of our operations. We take pride in our state-of-the-art manufacturing facilities, equipped with cutting-edge technology and staffed by a team of skilled engineers and technicians. This enables us to consistently deliver products that meet the highest standards of quality, reliability, and performance.



**QUALITY  
ASSURANCE**



**TIMELY  
DELIVERY**



**COMPETITIVE  
PRICING**



**STRONG  
PARTNERSHIP**

**GET IN TOUCH**



# FEED PUMP & FEED PUMP PARTS

Product No: 11 002



**FEED PUMP TATA  
ROLLER TYPE  
(9 440 030 002)**

Product No: 11 003



**FEED PUMP MASSEY  
ROLLER TYPE  
(9 440 030 003)**

Product No: 11 011



**FEED PUMP FORD  
ROLLER TYPE  
(9 440 030 011)**

Product No: 11 018



**FEED PUMP 2511  
ROLLER TYPE  
(9 440 030 018)**

Product No: 11 028



**FEED PUMP TATA  
PIN TYPE  
(9 440 030 028)**

Product No: 11 029



**FEED PUMP 029  
PIN TYPE  
(9 440 030 029)**

Product No: 11 030



**FEED PUMP  
MASSEY PIN TYPE  
(9 440 030 030)**

Product No: 11 031



**FEED PUMP  
FORD PIN TYPE  
(9 440 030 031)**

Product No: 11 038



**FEED PUMP 038  
PIN TYPE  
(F 002 A50 038)**



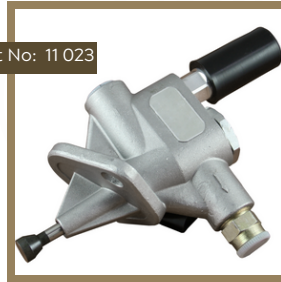
# FEED PUMP & FEED PUMP PARTS

Product No: 11 040



**FEED PUMP 040  
PIN TYPE  
(F 002 A50 040)**

Product No: 11 023



**FEED PUMP TC  
(F 002 A50 023)**

Product No: 11 053



**FEED PUMP  
REPAIR KIT  
(9 441 037 001)**

Product No: 11 054



**F.P. REPAIR KIT  
HALF**

Product No: 12 014



**FEED PUMP  
VALVE  
(2 443 203 001)**

Product No: 12 015



**F.P. ADOPTER  
OPEN TYPE  
(2 443 355 000)**

Product No: 12 016



**F.P. ADOPTER  
CLOSE TYPE  
(2 443 462 009)**

Product No: 12 017



**F.P. BOWL FILTER  
(1 450 410 011)**

Product No: 12 018



**F.P. BOWL  
CLAMP  
(2 459 999 000)**



# FEED PUMP & FEED PUMP PARTS



**F.P. PISTON**  
**(2 449 998 709)**



**F.P. PISTON N/M**  
**040**



**F.P. PIN OLD MODEL**  
**(2 449 998 313)**



**F.P. PIN HEAD TYPE**  
**(2 443 120 022)**



**F.P. PIN TC**



**F.P. PIN 040**



**F.P. PLUG**



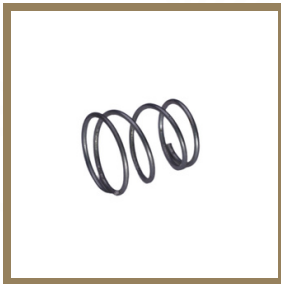
**F.P. BOWL NUT &**  
**SCREW**



**F.P. BOWL**



# FEED PUMP & FEED PUMP PARTS



F.P. BOWL  
FILTER SPRING



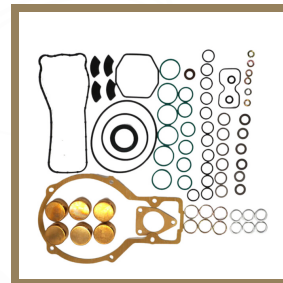
F.P. PISTON  
SPRING TC



F.P. PISTON  
SPRING



GASKETS



PUMP REPAIR  
KIT



# HAND PRIMERS

Product No: 12 001



**HAND PRIMER  
(F 002 A50 013)**

Product No: 12 002



**HAND PRIMER  
SPRING TYPE**

Product No: 12 003



**HAND PRIMER  
CAV TYPE**

Product No: 12 004



**HAND PRIMER TC  
(2 447 010 033)**



**HAND PRIMER**



**HAND PRIMER**



# GOVERNOR ASSEMBLIES & SPARE PARTS



**GOV. FORK PIN RSV  
(1 423 000 005)**



**GOV. WEIGHT  
PIN RSV**



**GOV. CENTER  
PIN & LOCK RQV**



**GOV. SLIDER  
RQV**



**GOV. BUSH RSV  
(1 420 328 034)**



**GOV. BUSH RSV  
CLOSE TYPE**



**GOV. BUSH JCB**



**SWIVELLING  
LEVER RSV  
(1 422 013 036)**



**SWIVELLING  
LEVER MDI  
(1 422 013 039)**

# GOVERNOR ASSEMBLIES & SPARE PARTS



Product No: 14 015



**SWIVELLING  
LEVER T-407  
(1 422 013 044)**

Product No: 14 016



**SWIVELLING  
LEVER 3610  
(1 422 013 118)**

Product No: 14 018



**GUIDE LEVER RSV  
(1 421 933 048)**

Product No: 14 019



**GUIDE LEVER  
3610**

Product No: 14 020



**BEARING  
ASSY. RSV**

Product No: 14 023



**BEARING ASSY.  
3610**

Product No: 14 024



**IDLING ASSEMBLY  
RSV**

Product No: 14 026



**IDLING CAP  
SMALL**

Product No: 14 027



**CHOKE  
COMPLETE RQV**

# GOVERNOR ASSEMBLIES & SPARE PARTS



Product No: 14 030



**CHOKE  
PATTI RSV**

Product No: 14 031



**CHOKE PATTI  
3610**

Product No: 14 032



**CHOKE  
SHAFT TC**

Product No: 14 035



**CHOKE BUSH  
INTER**

Product No: 14 036



**CHOKE SHAFT TC  
WITH LOCK & BUSH**

Product No: 14 037



**DAMPING  
VALVE P3**

Product No: 14 038



**DAMPING  
VALVE RQV**

Product No: 15 001



**AIR BREATHER  
SMALL  
(1 427 432 000)**

Product No: 15 002



**AIR BREATHER  
BIG  
(1 427 432 010)**

# GOVERNOR ASSEMBLIES & SPARE PARTS



Product No: 15 003



**AIR BREATHER  
ADOPTER BIG**

Product No: 15 004



**AIR BREATHER  
ADOPTER SMALL**

Product No: 17 001



**ACCELERATOR  
SHAFT RQV  
(1 423 002 080)**

Product No: 17 002



**ACCELERATOR  
SHAFT P3  
(9 421 033 001)**

Product No: 17 006



**ACCELERATOR  
SHAFT BUSH RQV**

Product No: 17 012



**ACCELERATOR  
LEVER RSV**

Product No: 17 013



**ACCELERATOR  
LEVER 2511**

Product No: 17 014



**ACCELERATOR  
LEVER ARJUN**

Product No: 17 015



**ACCELERATOR  
LEVER MDI**

# GOVERNOR ASSEMBLIES & SPARE PARTS



Product No: 17 016



**ACCELERATOR  
LEVER RQV**

Product No: 17 017



**ACCELERATOR  
LEVER LONG RQV**

Product No: 17 018



**ACCELERATOR  
LEVER PATTI P3  
(9 421 031 905)**

Product No: 21 017



**CAM NUT  
RSV**

Product No: 21 018



**CAM NUT DI**

Product No: 21 020



**DRAIN BOLT  
RSV**



**DIAPHRAGM**



**CAM SHAFT**

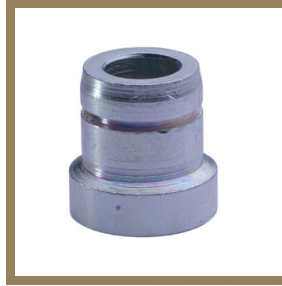


**DRAIN BOLT  
ADAPTERS**

# GOVERNOR ASSEMBLIES & SPARE PARTS



**GOV. BUSH ZEXEL  
OPEN TYPE**



**GOV. BUSH ZEXEL  
CLOSE TYPE**



**GOV. FORK PIN  
NEW MODEL**



**GOV. SQUARE  
PIN SMALL & BIG**



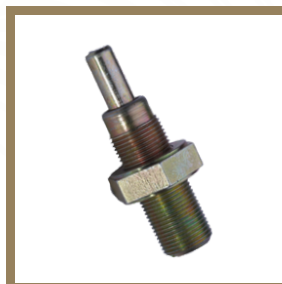
**FLOATING  
LEVER**



**GOVERNOR  
FLYWEIGHT**



**GOV. LINK PIN  
FORD**



**DAMPING VALVE  
RSV**



**CHOKE  
PATTI RSV**

# GOVERNOR ASSEMBLIES & SPARE PARTS



**CHOKE COMPLETE  
SHAKTIMAN**



**GOV. SQUARE  
RSV & 3610**



**GOVERNOR  
SHAFT**



**IDLING ASSEMBLY  
SMALL**



**CHOKE SPRING  
INTER**



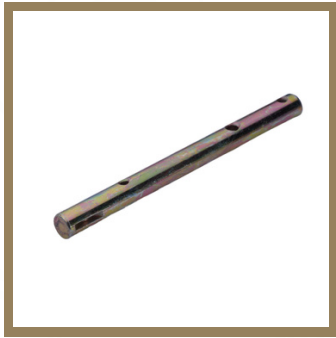
**STARTING  
SPRING**



**CONTROL ROD  
GUIDE PATTI**



# GOVERNOR ASSEMBLIES & SPARE PARTS



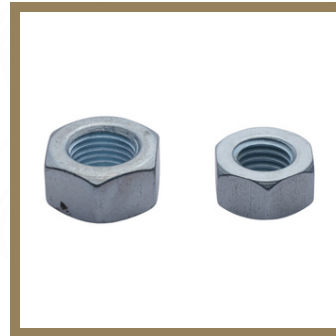
**CHOKE  
SHAFT TRAX**



**ACC. SHAFT  
307**



**CHOKE BUSH TC**



**CAM NUTS**



**CONTROL ROD  
CAP FORD**



**AIR BREATHER  
ADOPTER PLATE TYPE**





# OVER FLOW VALVES & OVER FLOW PIPES

Product No: 12 005



**OVERFLOW  
VALVE TC  
(F 002 A10 627)**

Product No: 12 006



**OVER FLOW VALVE  
OLD MODEL  
(1 457 413 010)**

Product No: 12 007



**OVER FLOW  
VALVE 'S' MODEL  
(1 417 413 047)**

Product No: 12 008



**OVER FLOW  
VALVE 2511  
(1 417 413 032)**

Product No: 12 009



**OVER FLOW  
VALVE TC 2515  
(F 002 A10 695)**

Product No: 12 011



**OUT VALVE  
0.55**

Product No: 12 013



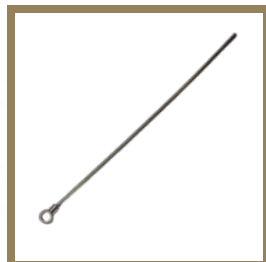
**NON RETURN  
VALVE DPC**



**OVERFLOW  
VALVE**



**TESTER PIPE**



**OVER FLOW  
PIPE**



**OVERFLOW  
PIPES**



# TAPPET ROLLERS & ASSEMBLIES

Product No: 13 001



**FEED PUMP  
ROLLER & PIN**

Product No: 13 003



**ROLLER & PIN 'A'  
TYPE**

Product No: 13 004



**ROLLER, BUSH &  
PIN 'B' TYPE**

Product No: 13 005



**ROLLER & PIN  
'B' TYPE**

Product No: 13 011



**ROLLER, BUSH &  
PIN LEYLAND-680**

Product No: 13 012



**ROLLER & PIN  
TEMPO**

Product No: 13 015



**ROLLER, BUSH  
& PIN BS-4**

Product No: 13 017



**TAPPET ROLLER  
GUIDE 'B' TYPE**

Product No: 13 019



**TAPPET ROLLER  
GUIDE APE**



**RUNNERS**



# NOZZLE CAP NUTS

Product No: 18 008



**NOZZLE CAP  
KIRLOSKAR**

Product No: 18 010



**NOZZLE CAP  
MASSEY**

Product No: 18 011



**NOZZLE CAP MDI  
(9 431 033 343)**

Product No: 18 014



**NOZZLE CAP  
FORD**

Product No: 18 015



**NOZZLE CAP  
TC**

Product No: 18 017



**NOZZLE CAP  
JCB**

Product No: 18 018



**NOZZLE CAP  
HINO 'P' TYPE**

Product No: 18 019



**NOZZE CAP ECO  
SPORT**

Product No: 18 020



**NOZZLE CAP  
120**



# NOZZLE CAP NUTS

Product No: 18022



**NOZZLE CAP  
INNOVA**

Product No: 18 023



**NOZLE CAP  
VERNA**



**NOZZLE CAP  
DELPHI**



**NOZZLE CAP  
SWIFT**



**AUTOMISER  
CONNECTIONS**



**NOZZLE SEATS**



# BANJO BOLTS & BANJO TEES

Product No: 19 016

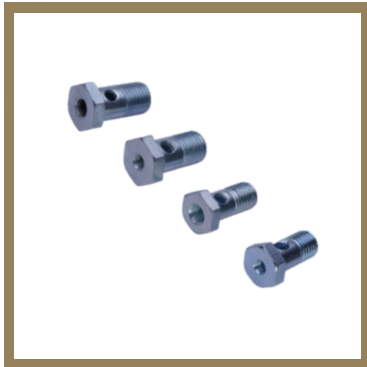


**PRE FILTER  
EXTENSION MDI**

Product No: 19 017



**PRE FILTER EXTENSION  
MASSEY DI**



**BANJO BOLTS**



**BANJO TEES**

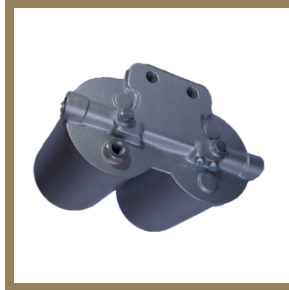


**BANJO BOLTS**

# DIESEL FILTER COVER & ASSEMBLIES



**DIESEL FILTER ASSEMBLY (0.5L)**



**DIESEL FILTER ASSEMBLY (1L)**



**DIESEL FILTER COVER ESCORT**



**DIESEL FILTER COVER FORD**



**DIESEL FILTER COVER MDI**



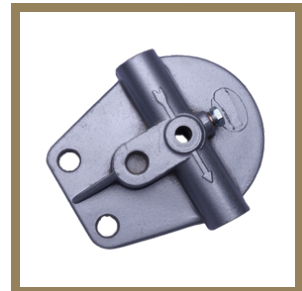
**PRE FILTER ASSEMBLY**



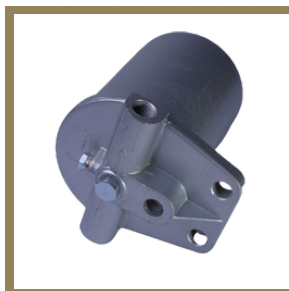
**FILTER BOWL**



**WATER SEPERATOR**



**DIESEL FILTER COVER SINGLE**



**DIESEL FLTER ASSEMBLY SINGLE**



# RACKS & GEARS

Product No: 16 001



**CONTROL RACK P2**

Product No: 16 002



**CONTROL RACK P3  
(1 416 023 006)**

Product No: 16 003



**CONTROL RACK P4  
(1 416 024 007)**

Product No: 16 004



**CONTROL RACK P6  
(1 416 026 004)**

Product No: 16 005



**CONTROL RACK  
EICHER  
(9 411 036 002)**

Product No: 16 007



**CONTROL RACK  
'A' TYPE 9MM**

Product No: 16 008



**CONTROL RACK  
'A' TYPE 11MM**

Product No: 16 009



**CONTROL ROD 'B' TYPE  
(9 411 036 002)**



# RACKS & GEARS

Product No: 16 012



**CONTROL SLEEVE  
CUT TYPE  
(1 410 326 030)**

Product No: 16 015



**TOOTH  
QUADRANT  
(1 416 336 061)**

Product No: 16 016



**CONTROL SLEEVE 'A'  
CUT TYPE  
(1 410 364 031)**

Product No: 16 017



**CONTROL SLEEVE  
'A' BROACH TYPE  
(F 002 F31 019)**

Product No: 16 018



**CONTROL  
SLEEVE 'B' TYPE**



**CONTROL SLEEVE &  
QUADRANT**



# NUTS, BOLT & SCREWS



Product No: 21 017



CAM NUT RSV

Product No: 21 018



CAM NUT DI

Product No: 21 020



DRAIN BOLT RSV

Product No: 21 032



FILTER BOLT

Product No: 21 039



INSPECTION  
PLATE BOLT

Product No: 21 040



INSPECTION PLATE  
BOLT ALLEN KEY

Product No: 21 041



INSPECTION PLATE  
SCREW OLD MODEL

Product No: 21 055



QUADRANT  
SCREW

Product No: 21 058



TAPPET  
BOLT & NUT



AIR VENT  
ASSEMBLIES



AIR VENT  
SCREWS



# NUTS, BOLT & SCREWS



**CLOSING PLUGS**



**MAXIMUM SCREWS**



**NUTS & SCREWS**



**OPEN TOP BOLTS**



**PIPE NUTS NEW MODEL**



**PIPE NUTS OLD MODEL**



**ALLEN KEY BOLTS**



**CAGE NUTS**



**FLANGE NUT**

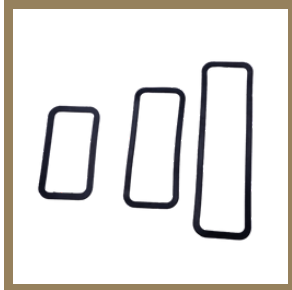


**NYLOCK NUT & BOLT**

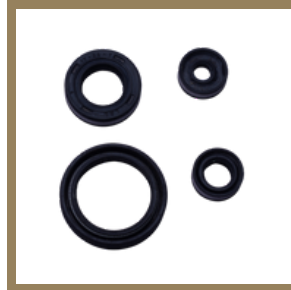


**NYLOCK NUT**

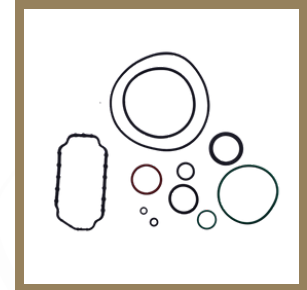
# RUBBER COMPONENTS & OIL SEALS



I. P.  
PACKINGS

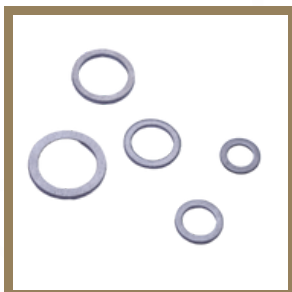


OIL  
SEALS

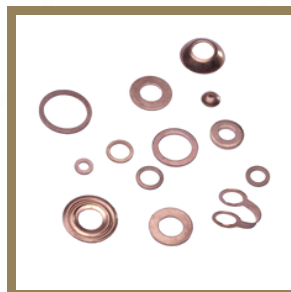


RUBBER  
COMPONENTS

# COPPER & ALUMINIUM WASHERS



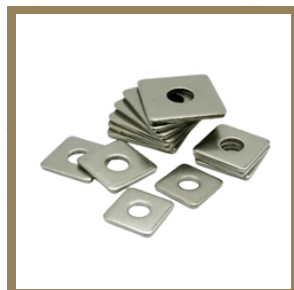
ALUMINIUM  
WASHERS



COPPER  
WASHERS



SPRING  
WASHERS



SQUARE  
WASHERS



STEEL LOCK  
WASHERS



# VE PUMP PARTS

Product No: 17 010



**ACC. SHAFT  
BUSH VE TC  
(1 460 324 332)**

Product No: 17 011



**ACC. SHAFT BUSH  
VE MARSHAL  
(1 460 324 333)**



**ACC. BUSH  
SMALL**



**ACC. SHAFT  
BUSH TC**



**ACC. SHAFT  
BUSH MARSHAL**



**ADAPTERS VE**



**ALLEN KEY  
BOLTS**



**CAM BUSHES**



**KENCHI  
SPRING TC**



**LEVER SHAFTS VE**



**T.D. PISTON  
PACKING VE**



**T.D. PISTON**



# TRACTOR PARTS



**CLEVIS PINS**



**COMBINE  
HARVESTER BLADES**



**DRAW BARS**



**HITCH PINS**



**LINCH PINS**



**TOP LINK  
PINS**



**LOWER LINK**



**PTO PINS  
ROUND**



**ROTAVATOR  
SIDE GEAR**



# TRACTOR PARTS



**SHEET METAL COMPONENTS**



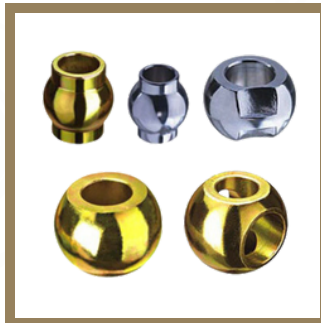
**SICKLE GUARDS**



**STABILIZER CHAIN ASSEMBLY**



**LINK PINS**



**TRACTOR BALLS TOP LINK**



**U BOLTS**



**WING NUT**



# MISCELLANEOUS ITEMS

Product No: 16 021



**CONTROL  
ROD CAP RSV**

Product No: 16 022



**CONTROL ROD  
BUSH PLAIN  
(1 410 202 086)**

Product No: 16 025



**CONTROL ROD  
BUSH ECH SMALL**



**CONTROL ROD BUSH  
MASSEY O/M**



**D. V. HOLDER  
N/M**



**D. V. HOLDER**



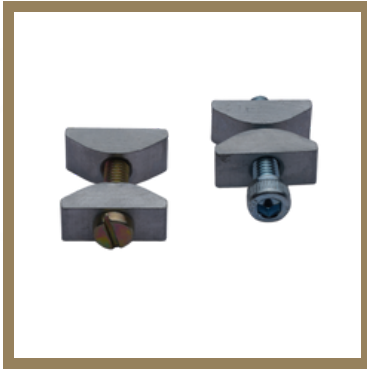
**ELEMENT  
SPRING**



**FUEL PUMP  
COUPLING**



# MISCELLANEOUS ITEMS



**HOLDER LOCKS**



**KEYS**



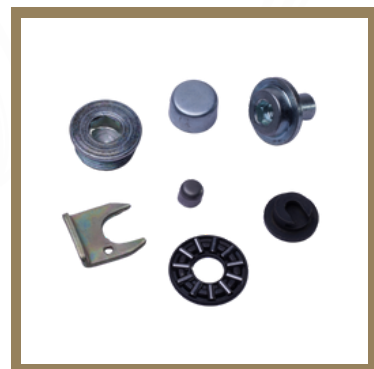
**MACHINE  
COUPLING BIG**



**PUMP  
COUPLING P3**



**PUMP  
COUPLING SMALL**



**MISCELLANEOUS  
ITEMS**





**DIESEL FUEL INJECTION SPARES**

# Contact Us

## Lal Industries

Amarjit Kamboj (Company Chairman)  
Sunil Kamboj (Managing Director)



+91 98724-03695  
+91 94170-84242

+91-(161)-2490898  
+91-(161)-2498496



[lalindustries1@gmail.com](mailto:lalindustries1@gmail.com)



#3961/2 , 11th Street , Daba Road, Shimlapuri,  
Ludhiana - 141003 , (Punjab) , India.